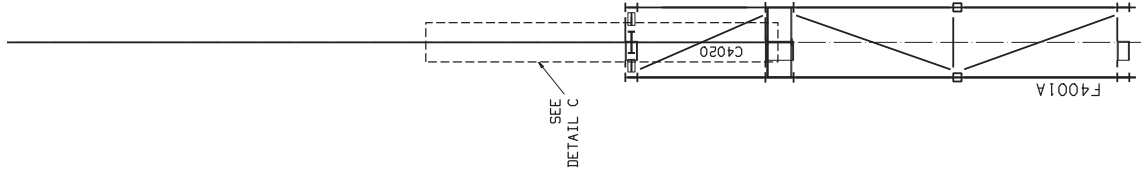


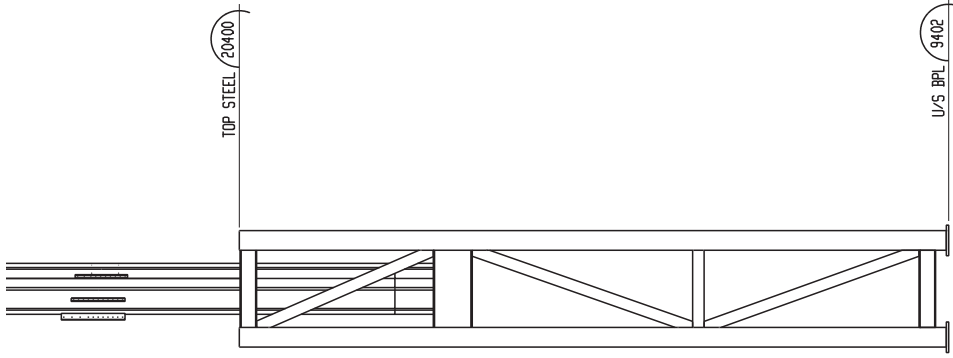
ERECTION NOTE:

- 1-REMOVE FRAME F4001 AFTER ALL TRUSS TRUSS HAVE BEEN ERECTED.
- 2-FIELD CUT C4020 AS NOTED USING OXY FUEL, PAY ATTENTION TO THE CUT TO MAKE IT AS STRAIGHT AS POSSIBLE, GRIND IF NECESSARY.
- 3-ERECT M4015 WITH 8 BOLTS, FIELD WELD AS NOTED AFTERWARDS REMOVE BOLTS AND PLUG WELD HOLES.
- 4-GRIND ALL WELD SMOOTH AND PAINT.

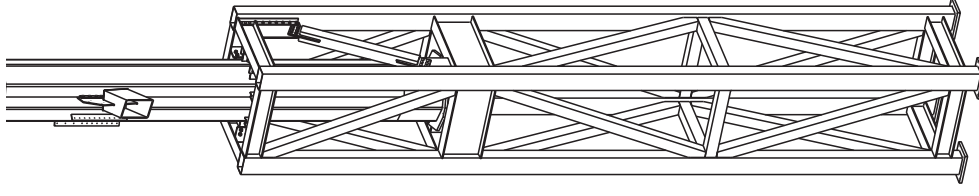


NOTE:
 ERECT MEMBERS B4046
 AND V4078 WHEN HUB (C4020)
 IS INSERTED IN TEMPORARY
 FRAME ONLY

DETAIL C



SECTION A



ISO